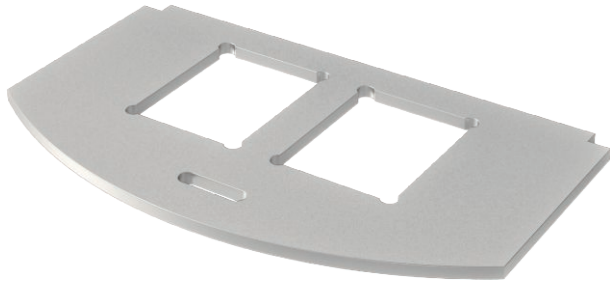


# Technical data sheet

## Mounting plate for data technology, type C

Item no. 7408806



Mounting plate to accept two data connection modules of the following types: Brand-Rex: shielded; EKU: E-Stone; Dätwyler: KS-T, MS-K and KU-T module; R&M: Snap-In and Keystone; Rutenbeck: UM and UMflex; SETEC: MKJ, UKJ and XKJ; Simon TERA; Telegärtner: AMJ and UMJ. Dimensions of a mounting opening in mm: 19.30 x 14.80.

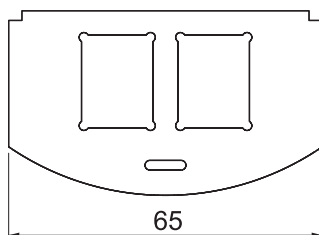


**A2** Stainless steel, rustproof 1.4301

### Master data

Item no.	7408806
Type	MP R2 2C
Description 1	Mounting plate for GES R2
Description 2	for 2x Typ C
Material	Stainless steel, material no. 1.4301
Material symbol	A2
Smallest sales unit (VG)	1,00 Piece
Weight	1,95 kg/100 pc.

### Technical data



Length	65,00 mm
Width	36,00 mm
Application	Mounting box
Number of single openings	2,00
Number of double openings	0,00
Number of triple openings	0,00
Number of CEE/Perilex openings	0,00
Number of square openings	0,00
Number of round openings	0,00
Number of oval openings	0,00
Number of installable devices	2,00
Fastening type	Lockable
Labelling panel	<input type="checkbox"/>
Blinddeckel	<input type="checkbox"/>
Suitable for labelling panel	<input type="checkbox"/>
Installation technology	Other